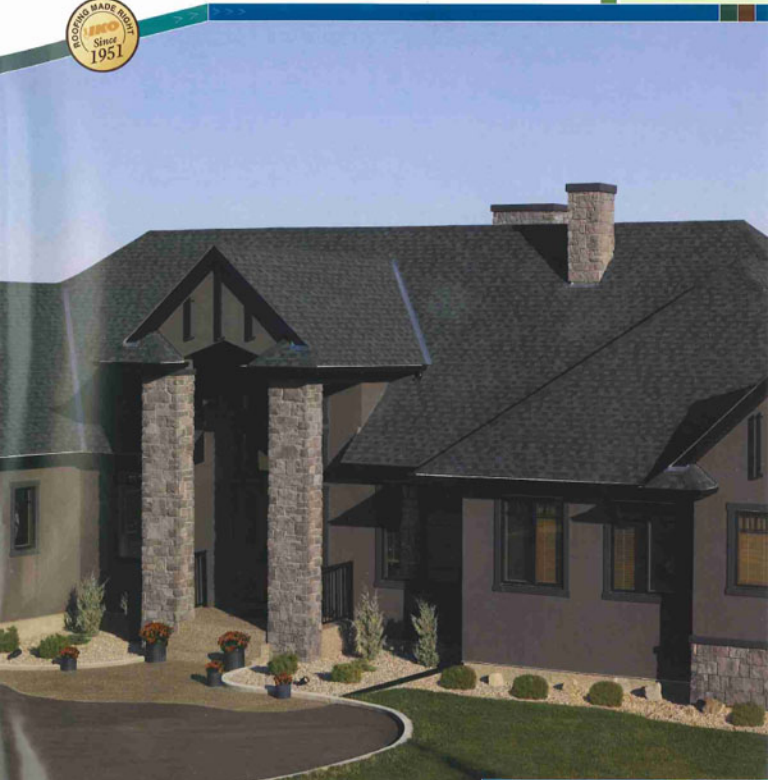




# PREMIUM ROOFING

PRODUCTS CATALOGUE

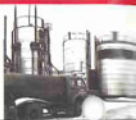


▶ [www.iko.com](http://www.iko.com)

Product featured is Cambridge Dual Black.



# THE IKO STORY



Since IKO opened our first plant over 50 years ago in Calgary, Alberta, we have concentrated on four key ingredients: the talent and commitment of our people, top quality products, continuous innovation, and state-of-the-art manufacturing facilities. Judging by the phenomenal growth in loyal customers, these ingredients are exactly what our customers are looking for.

Today, IKO has grown into a world class organization specializing in the development and manufacture of top-quality residential and commercial/ industrial asphalt roofing products. Unlike many of our competitors, asphalt roofing is IKO's primary business. We strive to be the experts in the business and are continually setting the standards. Our best talent and efforts are always devoted to our high-quality asphalt roofing products.

Our commitment to the asphalt roofing industry has made IKO one of the largest manufacturers of asphalt shingles in North America and the biggest exporter of asphalt shingles in the world. With over 25 strategically located production facilities throughout North America and Europe, IKO exports to many continents, servicing over 50 worldwide markets. Our call centers are focused on providing timely and efficient service to our customers.

Our experience in meeting the diverse worldwide quality, and building code requirements has reinforced our dedication to continuously improve and expand our product line. Our customers reap the benefits of this continuous development.

IKO doesn't just manufacture innovative products. We're also innovative in how our products are manufactured. Unlike competitive companies that rely on outside suppliers and producers, IKO is vertically integrated from top to bottom. All the key components used in IKO roofing products are manufactured in-house, under our own stringent quality controls. This provides us with superior quality control over the finished products.

IKO has been producing high-quality roofing products worldwide for over three generations. We put this reputation for quality to the test each time our shingles are installed. Experience has shown that the early years following installation are the most critical ones to you. That is why we offer the unique initial limited warranty coverage we call "Iron Clad" protection. Be sure to obtain a copy of the IKO Asphalt Shingle Limited Warranty for your peace of mind.



## Building Greener Tomorrows

For nearly 60 years, IKO roofing products have protected your home and your possessions from the elements. Now IKO is working hard at doing its part to protect the environment, and contribute to "Building Greener Tomorrows" for everyone.

We're pleased to announce that selected IKO shingles are the first in the asphalt roofing industry to receive independent verification of recycled content from the prestigious Scientific Certification Systems organization. SCS certification on our shingles will now allow builders using our shingles to claim valuable LEED credits for their construction projects. Visit [www.iko.com](http://www.iko.com) for details.

Building  
greener

## Premium Roofing Products

IKO manufactures a full line of asphalt roofing shingles. Our shingles are available in several popular styles in a variety of colors.

**Architectural Shingles** – composed of two pieces of asphalt shingle material laminated together to form one solid piece. The bottom piece, or shim, provides the base of the shingle as well as a contrast in color. The top piece, or dragon tooth, provides the depth as well as further contrast in color. Their limited warranties range from 30 years to Lifetime.



### ALGAE RESISTANT

Don't let algae ruin the appearance of your roof!

Protect it and keep it looking like new, year after year, by choosing IKO shingles with **ALGAE RESISTANT** granules. We embed these ceramic-coated copper granules right into our shingles. They're colorfast, so they won't break down in UV light. And the copper in them inhibits the growth of algae, so that your roof won't develop those unsightly black streaks. If you live in an area of high humidity – or even if you don't – insist on IKO shingles with AR granules to protect your investment. Beautifully.



**AR**  
Algae Resistant

## TABLE OF CONTENTS

PAGES

### ARCHITECTURAL SHINGLES

- **ARMOUR-SHAKE**  
Architectural Shingles - fiberglass base 4 - 5
- **CAMBRIDGE LT & ROOF-SHAKE 40**  
Angle-cut Architectural shingles - fiberglass base 6 - 7
- **CROWNE SLATE**  
IKO-SBS Modified Asphalt Architectural Shingles - fiberglass base 8 - 9
- **CAMBRIDGE 30 AR & 30**  
Angle-cut Architectural shingles - fiberglass base 10 - 11

### TRADITIONAL SHINGLES

- **3-TAB DESIGN**  
Fiberglass shingles 12

### IKO ASPHALT SHINGLES

- **THE ANATOMY OF AN ASPHALT SHINGLE** 13

### ACCESSORY PRODUCTS

- **ARMOUR-GARD ICE & WATER PROTECTOR** 14
- **STORMSHIELD™ STANDARD ICE & WATER PROTECTOR**
- **ULTRA HP™ HIGH PROFILE RIDGE CAP SHINGLES**

### IKO WORLDWIDE

- **MANUFACTURING PLANTS AND SALES OFFICES** 15

Product and color availability subject to shipping area.

#### Class A Fire Resistance Rating

IKO fiberglass shingles feature a Class "A" Fire Resistance Rating. Class "A" simulates the conditions characteristic of severe external fire hazards. As part of a complete shingle roof system (deck, underlayment and the shingles themselves) IKO fiberglass shingles meet the stringent tests of ASTM E108 and CANULC S107.

To ensure complete satisfaction, please make your final color selection from several full size shingles and view a sample of the product installed on a home.

Be sure to look at the color samples of all materials in natural sunlight, at different times of day to ensure that your color choices are complementary. Colors shown in printed materials may not be accurate, and color chips do not reflect the dramatic color blends of the full shingle.



A roof on an overcast day.



The same roof at midday.



The same roof in full sun during the late afternoon.

# ARMOURSHAKE



## Architectural Shingles

IKO Armourshake premium fiberglass-based asphalt shingles provide a dimensional thickness that enhances the rough-hewn, random-cut appearance, texture and profile of classic wood shakes. They are equally at home on any dwelling, from rustic country casual to urban sophisticated styles. At a price that's much more comfortable than real wood shakes.

- Premium fiberglass asphalt shingle
- Architectural style for stunning curb appeal
- Double-layer construction of extra-heavy, flexible fiberglass mat
- Featuring an algae resistant granule
- Modified sealant for superior wind resistance
- Armour Starter accessory available
- Class "A" Fire Resistance Rating<sup>1</sup>
- Limited wind warranty coverage up to 145 km/h (90 mph); wind warranty upgrade to **210 km/h (130 mph)**<sup>2</sup>
- Product meets IRC wind code requirements
- Limited Lifetime Warranty<sup>3</sup>
- 10 year IKO "Iron Clad" protection<sup>3</sup>

<sup>3</sup>See Limited Warranty and shingle application instructions for complete information.

**Note:** Limited lifetime warranty applies only to shingles applied to 4:12 and steeper.

**Note:** IKO Ultra<sup>®</sup>™ available for hips and eaves.  
Product availability subject to shipping area.



Specifications	Standards <sup>1</sup>
<b>Length</b> 949 mm (37-3/8")	• ASTM D3162 • ASTM D3018
<b>Width</b> 470 mm (18-1/2")	• ASTM D3161 • ASTM E108 Class "A" Fire Resistance Rating <sup>2</sup>
<b>Exposure</b> 140 mm (5-1/2")	• CSA A123.5 • CSA A123.51
<b>Coverage per Bundle</b> 1.86 m <sup>2</sup> (20 sq. ft.)	

**Note:** All values shown are approximate.

<sup>1</sup> Product is designed and tested to comply with ASTM/CSA Standards at time of manufacture prior to packaging.



<sup>2</sup> Use of an approved underlayment beneath all fiberglass shingles is strongly recommended, especially on roof slopes below 4:12. Class "A" Fire Resistance Rating is achieved only with the installation of an approved underlayment.



**Note:** Armourshake shingles feature an algae resistant system with a Limited Algae Resistance Warranty.<sup>3</sup>



## COLOR AVAILABILITY



Shadow Black



Greystone



Weathered Stone



Chalet Wood



Western Redwood

**Note:** Shingle swatches shown are as accurate as modern printing processes allow. Shingle chips shown do not fully represent the entire color blend range of the shingles. To ensure complete satisfaction please make your final color selection from several full size shingles and view a sample of the product installed on a home. The information in this literature is subject to change without notice. IKO assumes no responsibility for errors that may appear in this literature.



Color featured is Chalet Wood.

>> Architectural Shingles

**ARMOURSHAKE** >>>

**IKO**  
Setting the Standard

# CAMBRIDGE LT & ROOFSHAKE 40



## Architectural Shingles

IKO Cambridge LT laminated fiberglass asphalt shingles are the pinnacle of our Cambridge line, for performance and protection. Their extraordinary dimensional thickness creates a high-definition, natural "shake" look and profile. A double-layer construction of extra-heavy fiberglass mat (among the heaviest in the roofing industry) combined with a tough modified sealant provides superior strength, durability, wind and weather-resistance. Protection against unsightly algae streaks is built right in with our algae resistant granules. Thanks to their extra-large size, these shingles save on installation time, overall making them a very affordable choice for any home. Like yours.

IKO RoofShake 40 shingles are laminated to provide a remarkable dimensional thickness, not only for strength, durability, and weather resistance, but also to create an extraordinarily beautiful look for your home. RoofShake 40 is manufactured in a larger size with more exposure to create a high definition "shake" look for your roof. Its double layer construction, using an extra-heavy fiberglass mat and tough modified sealant, provides superior durability and wind resistance. RoofShake 40 shingles are surprisingly affordable and are the perfect choice to protect and beautify your home.

- Extra heavyweight fiberglass asphalt shingles
- Architectural shingles
- Cambridge LT features an algae resistant granule
- Class "A" Fire Resistance Rating<sup>†</sup>
- Limited wind warranty coverage up to:
  - 145 km/h (90 mph); wind warranty upgrade to **210 km/h (130 mph)** for Cambridge LT<sup>‡</sup>
  - 128 km/h (80 mph); wind warranty upgrade to **177 km/h (110 mph)** for RoofShake 40<sup>‡</sup>
- Product meets IRC wind code requirements
- Limited Lifetime or 40-Year Warranty<sup>§</sup>
- 10 year or 5 year IKO "Iron Clad" protection<sup>§</sup>

<sup>§</sup>See Limited Warranty and shingle application instructions for complete information.



Reinforced nailing zone with a high-strength, tear-resistant film.

Specifications	Standards <sup>†</sup>
<b>Length</b> 1029 mm (40-1/2")	• ASTM D3462 • ASTM D3018
<b>Width</b> 343 mm (13-1/2")	• ASTM D3161
<b>Exposure</b> 146 mm (5-3/4")	• ASTM E108 Class "A" Fire Resistance Rating <sup>†</sup>
<b>Coverage per Bundle</b> Cambridge LT - 2.25 m <sup>2</sup> (24.2 sq. ft.) RoofShake 40 Calgary - 3 m <sup>2</sup> (32.3 sq. ft.) RoofShake 40 Sonas - 2.25 m <sup>2</sup> (24.2 sq. ft.)	• CSA A123.5 • CSA A123.51 • CSA A123.52

<sup>†</sup>Note: All values shown are approximations.

<sup>‡</sup>Product is designed and tested to comply with ASTM/CSA Standards at time of manufacture prior to packaging.



<sup>‡</sup>Use of an approved underlayment beneath all fiberglass shingles is strongly recommended, especially on roof slopes below 6:12. Class "A" Fire Resistance Rating is achieved only with the installation of an approved underlayment.



<sup>†</sup>Note: Cambridge LT shingles feature an algae resistant system with a Limited Algae Resistance Warranty.<sup>§</sup>



Our Cambridge LT & RoofShake 40 architectural shingles have a wide reinforced nailing ZONE that's hard to miss; it's not just a nailing line!

<sup>§</sup>Note: IKO Hip & Ridge, UltraHD™ or Marathon Ultra AR available for hips and ridges. Product availability subject to shipping area.

## COLOR AVAILABILITY



Dual Black



NW Harvard Slate



Castle Grey



Dual Brown



Weatherwood



NW Driftwood



Aged Redwood



Forest Green

<sup>†</sup>Note: Shingle swatches shown are as accurate as modern printing processes allow. Shingle chips shown do not fully represent the entire color blend range of the shingles. To ensure complete satisfaction please make your final color selection from several full size shingles and view a sample of the product installed on a home. The information in this literature is subject to change without notice. IKO assumes no responsibility for errors that may appear in this literature.



Color featured is NW Driftwood.

>> Architectural Shingles

CAMBRIDGE LT & ROOFSHAKE 40 >>>



# CROWNE SLATE



## Architectural Shingles

Our Crowne Slate shingles represent a breakthrough in technology, performance and aesthetics. Until recently, it was virtually impossible to recreate the subtle color and texture nuances of natural slate. But now any home can have the curb appeal of a natural slate roof without its expense, weight and maintenance worries! Crowne Slate shingles have a dimensional thickness and profile to further evoke the beautiful contours and natural appearance of slate tiles.

Thanks to their hybrid, two-piece construction, our Crowne Slate IKO-SBS modified bitumen shingles are extremely durable and impact resistant, with a UL 2218 Class 4 Rating. They're engineered for resilience, durability, great handling and ease of installation even in cold weather conditions. With their algae-resistant granules, high-tensile strength and tear-resistance, Crowne Slate shingles will protect and perform as great as they'll look for years to come.

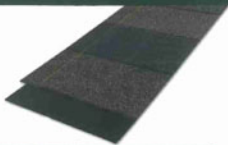
- IKO-SBS modified asphalt coating
- Fiberglass asphalt shingle
- Architectural shingle
- Featuring an algae resistant granule
- Independently tested to meet UL 2218, Class 4 impact resistance<sup>1</sup>
- Class "A" Fire Resistance Rating<sup>1</sup>
- Limited wind warranty coverage up to 145 km/h (90 mph); wind warranty upgrade to **210 km/h (130 mph)**<sup>2</sup>
- Product meets IRC wind code requirements
- Limited Lifetime Warranty<sup>3</sup>
- 10 year IKO "Iron Clad" protection<sup>1</sup>

<sup>1</sup>See Limited Warranty and shingle application instructions for complete information.

<sup>2</sup>This impact rating for Crowne Slate shingles is solely for the purposes of enabling residential property owners to obtain a reduction in their residential insurance premium and is not to be construed as any type of expressed or implied warranty by the manufacturer, supplier, or installer.

<sup>3</sup>Note: Limited lifetime warranty applies only to shingles applied to 4:12 and steeper.

<sup>4</sup>Note: Matching hip & ridge available for hips and ridges. Product availability subject to shipping area.



Specifications	Standards <sup>1</sup>
<b>Length</b> 1003 mm (39-1/2")	• ASTM D3462 • ASTM D3018
<b>Width</b> 336 mm (13-1/4")	• ASTM D3161 • ASTM E108 Class "A" Fire Resistance Rating <sup>1</sup>
<b>Exposure</b> 254 mm (10")	• CSA A123.5 • CSA A123.5.1
<b>Coverage per Bundle</b> 2.32 m <sup>2</sup> (25 sq. ft.)	• UL 2218 Class 4

<sup>1</sup>Note: All values shown are approximate.

<sup>2</sup>Product is designed and tested to comply with ASTM/CSA Standards at time of manufacture prior to packaging.



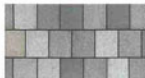
<sup>3</sup>Use of an approved underlayment beneath all fiberglass shingles is strongly recommended, especially on roof slopes below 6:12. Class "A" Fire Resistance Rating is achieved only with the installation of an approved underlayment.



Note: Crowne Slate shingles feature an algae resistant system with a Limited Algae Resistance Warranty.<sup>1</sup>



## COLOR AVAILABILITY



Regal Stone



Royal Granite



Greystone Jade

Note: Shingle swatches shown are as accurate as modern printing processes allow. Shingle chips shown do not fully represent the entire color blend range of the shingles. To ensure complete satisfaction please make your final color selection from several full size shingles and view a sample of the product installed on a home. The information in this literature is subject to change without notice. IKO assumes no responsibility for errors that may appear in this literature.





Color featured is Royal Granite.

>> Architectural Shingles

**CROWNE SLATE** >>>



# CAMBRIDGE 30 AR\* & 30



## Architectural Shingles

For durability, low maintenance, and great looks at a very attractive price, look to our Cambridge premium architectural shingle. Cambridge shingles are built to last. Double-layer construction and a tough, modified sealant provide for superior tear strength values and greater resistance to high winds. Cambridge shingles are manufactured in a larger size than most, with the added exposure enhancing the shake-like appearance. Cambridge is available in our unique, computer-generated color blends.



- Heavyweight fiberglass asphalt shingles
- Architectural shingles
- Cambridge 30 AR features an algae resistant granule
- Class "A" Fire Resistance Rating<sup>†</sup>
- Limited wind warranty coverage up to 112 km/h (70 mph); wind warranty upgrade to **177 km/h (110 mph)**<sup>†</sup>
- Product meets IRC wind code requirements
- Limited 30-Year Warranty<sup>†</sup>
- 5 year IKO "Iron Clad" protection<sup>†</sup>

Specifications	Standards <sup>†</sup>
<b>Length</b> 1029 mm (40-1/2")	• ASTM D3462 • ASTM D3018 • ASTM D3161
<b>Width</b> 343 mm (13-1/2")	• ASTM E108 Class "A" Fire Resistance Rating <sup>††</sup>
<b>Exposure</b> 146 mm (5-3/4")	• CSA A123.5 • CSA A123.51 • CSA A123.52
<b>Coverage per Bundle</b> 30 AR - 3.1 m <sup>2</sup> (33.3 sq ft) 30 Year - Calgary 3 m <sup>2</sup> (32.3 sq ft) - Sumas 3.1 m <sup>2</sup> (33.3 sq ft)	

Note: All values shown are approximate.

<sup>†</sup> Product is designed and tested to comply with ASTM/CSA Standards at time of manufacture prior to packaging.

\* Available from Sumas plant only.

<sup>††</sup> See Limited Warranty and shingle application instructions for complete information.

Note: IKO Hip & Ridge, Ultra6P™ or Marathon Ultra AR available for hips and ridges. Product availability subject to shipping area.



<sup>††</sup> Use of an approved underlayment beneath all fiberglass shingles is strongly recommended, especially on roof slopes below 6:12. Class "A" Fire Resistance Rating is achieved only with the installation of an approved underlayment.



Note: Cambridge 30 AR shingles feature an algae resistant system with a Limited Algae Resistance Warranty.<sup>†</sup>

## COLOR AVAILABILITY



Dual Black 30 AR/30



NW Harvard Slate 30 AR/30



Castle Grey 30



Dual Grey 30 AR/30



Dual Brown 30 AR/30



Heatherwood 30



Weatherwood 30 AR/30



NW Driftwood 30 AR/30



Aged Redwood 30



Earthstone Center 30



Riverside Red 30



Forest Green 30

Note: Shingle swatches shown are as accurate as modern printing processes allow. Shingle chips shown do not fully represent the entire color blend range of the shingles. To ensure complete satisfaction please make your final color selection from several full size shingles and view a sample of the product installed on a home. The information in this literature is subject to change without notice. IKO assumes no responsibility for errors that may appear in this literature.



Color featured is Dual Black.

>> Architectural Shingles

CAMBRIDGE 30 AR & 30 >>>



# TRADITIONAL



## 3-Tab Design Shingles

Traditional 3-tab design shingles are a perennial favorite due to their reliability and proven track record. Available in a wide range of colors and warranty lengths of 30, 25 or 20 years, traditional 3-tab design shingles offer exceptional roofing value.



### Fiberglass Asphalt Shingles<sup>1†</sup>

Marathon 25 available from Calgary plant only.

Marathon 20 available from Sumas plant only.

#### Marathon Ultra AR, Marathon 25 & Marathon 20

- Marathon Ultra AR shingles feature an algae resistant granule
- Limited wind warranty coverage up to 97 km/h (60 mph)<sup>1</sup>
- Product meets IRC wind code requirements
- Limited 30-Year, 25-Year or 20-Year Warranty<sup>1</sup>
- 5 year or 3 year IKO "Iron Clad" protection<sup>1</sup>

Specifications	Standards <sup>1</sup>
<b>Length</b> 1000 mm (39-3/8")	- ASTM D3962 - ASTM D9018 - ASTM D3161
<b>Width</b> 336 mm (13-1/4")	- ASTM E108 Class "A" Fire Resistance Rating <sup>2</sup>
<b>Exposure</b> 141 mm (5-5/8")	- CSA A123.5 (Marathon Ultra AR & 25) - CSA A123.51 - CSA A123.52
<b>Coverage per Bundle</b> 3 m <sup>2</sup> (12.3 sq. ft.)	

Note: All values shown are approximate.

<sup>1</sup> Product is designed and tested to comply with ASTM/CSA Standards at time of manufacture prior to packaging.



<sup>2</sup> Use of an approved underlayment beneath all fiberglass shingles is strongly recommended, especially on roof slopes below 4:12. Class "A" Fire Resistance Rating is achieved only with the installation of an approved underlayment.

Color Availability	Dual Black	NW Harvard Slate	Castle Grey	Dual Grey	Dual Brown	Heatherwood	Weatherwood	NW Driftwood	Aged Redwood	Earthstone Cedar	Riviera Red	Forest Green
Marathon Ultra AR	■	■	■	■	■	■	■	■	■	■	■	■
Marathon 25	C	C	C	C	C	C	C	C	C	C		
Marathon 20	S	S	S					S				

■ Available from Calgary & Sumas plants. C Available from Calgary plant only. S Available from Sumas plant only.

<sup>1</sup>See Limited Warranty and shingle application instructions for complete information.

▶ Product availability subject to shipping area. Please call your local distributor or visit our web site [www.iko.com](http://www.iko.com) for product and color availability in your area.

## COLOR AVAILABILITY



Dual Black



NW Harvard Slate



Castle Grey



Dual Grey



Dual Brown



Heatherwood



Weatherwood



NW Driftwood



Aged Redwood



Earthstone Cedar



Riviera Red



Forest Green

Notes: Shingle swatches shown are as accurate as modern printing processes allow. Shingle chips shown do not fully represent the entire color blend range of the shingles. To ensure complete satisfaction please make your final color selection from several full size shingles and view a sample of the product installed on a house. The information in this literature is subject to change without notice. IKO assumes no responsibility for errors that may appear in this literature.

# Here's why IKO shingles are ABOVE ALL THE REST!

## The difference starts with:

### 1 Heavyweight Fiberglass Mat

We use one of the heaviest fiberglass mats in the industry, manufactured in our state-of-the-art plant. With a nominal 2-lb base, it's engineered for superior strength and tear-resistance.

Next, we coat it with:

### 2 Superior Asphalt

Our local plants process their own asphalt to IKO's specifications and strictest standards of quality control. The result! Long-lasting weather-proofing. The more weather-proofing asphalt we use to coat the shingles, the longer the limited warranty period and the better the granule adhesion.

Then we add the protection of our:

### 3 Color Granules

We mine, then crush our own granules at regional manufacturing plants. They're extremely hard and durable, for maximum asphalt protection against the elements.

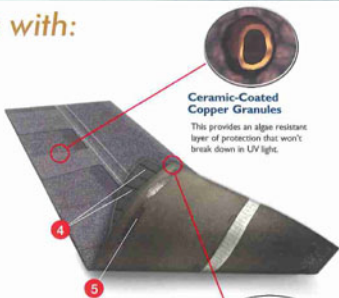
Our patented computer color blending technology ensures uniform and consistent color control. It also creates color gradations and a dimensional appearance that result in the industry's most stunning variety of roof colors. Some even mimic the look of natural slate and wood shakes!

IKO's AR granules provide added protection against the unsightly black streaks that gloeocapsa algae can cause, especially in maritime or humid climates. Now even light-colored roofs will keep looking great longer.

To create IKO's architectural shingles, we add extra layers of premium-quality shingles with our special:

### 4 Modified Lamination Adhesive

Because the adhesive is designed to be more flexible and durable, IKO's laminated shingles can handle the most extreme weather conditions. Plus they can be installed on a wide variety of roof slopes and shapes, even in very hot or very cold temperatures.



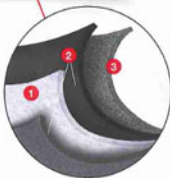
### Ceramic-Coated Copper Granules

This provides an algae resistant layer of protection that won't break down in UV light.

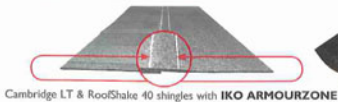
To keep our shingles on your roof, we use:

### 5 Modified Sealant

IKO's rubberized asphalt provides superior resistance to wind blow-off. In cold weather, some sealants can fracture. But IKO's sealant is made of rubberized asphalt, for exceptional adhesion and superior wind blow-off resistance. Tough and tenuous, it seals your roof at lower temperatures than most traditional sealants.



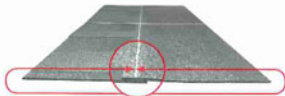
For over 50 years, IKO has been setting the standard.  
What makes us different, makes us better!



Cambridge LT & RoofShake 40 shingles with IKO ARMOURZONE



Reinforced nailing zone with a high-strength, tear-resistant film.



Competitor's shingles with standard nailing area

Our Cambridge LT & RoofShake 40 architectural shingles have a wide reinforced nailing ZONE that's hard to miss; it's not just a nailing line!

# ACCESSORY PRODUCTS

## Roof it right – with IKO Accessories!

Insist on IKO for all your residential roofing needs.

We manufacture premium-quality accessories such as RoofGuard-SB and RoofGuard-Cool Grey synthetic underlayments, self-adhering roofing underlayment, Roof-Fast self-adhering membranes, Leading Edge starter strips, felts and more. Your home deserves the best protection. IKO is IT!



## ArmourGard<sup>™</sup> Ice & Water Protector

"Invisible" protection against roof leaks.

- ▶ Helps prevent water leakage due to ice dams and wind-driven rain
- ▶ Improved flexibility for superior performance
- ▶ Slip-resistant surface for safe application
- ▶ Tear-resistant membrane
- ▶ Self-adhesive for watertight sealing
- ▶ Self-sealing around roofing nails
- ▶ Meets most building code requirements



Use IKO ArmourGard Ice & Water Protector or StormShield<sup>™</sup> Standard Ice & Water Protector on these critical roof areas.

## StormShield<sup>™</sup> Standard Ice & Water Protector



	Specifications	
	ArmourGard 2 square	StormShield <sup>™</sup>
Length	19.8 m (65')	19.8 m (65')
Width	91.4 mm (36")	91.4 mm (36")
Roll Coverage	18.1 m <sup>2</sup> (195 sq. ft.)	18.1 m <sup>2</sup> (195 sq. ft.)
Thickness	1.7 mm (.67 mil)	1.4 mm (.55 mil)

Note: All values shown are approximations.

## UltraHP<sup>™</sup>

## High Profile Ridge Cap Shingles

Take quality to another dimension.

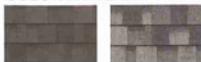
- ▶ Dramatic high-profile design adds dimension, depth and texture.
- ▶ Enhance your home's aesthetic appeal by accentuating the roof-line.
- ▶ Multi-layer construction for durability and superior tear strength values.
- ▶ Extra performance of IKO-SBS Asphalt Coating and Class 4 Impact Resistance Rating.

- ▶ Self-sealing adhesive backing for easy installation and maximum wind protection.
- ▶ Pre-formed rolled design features a curved edge with an 8-1/4" exposure – no need to cut or fold on the roof.
- ▶ Because there are fewer pieces to install than with traditional hip and ridge products, there's less labor involved.



## COLOR AVAILABILITY

Match the unique, computer-generated color blends of our Cambridge, RoofShake and Armourshake shingles.



Dual Black



NW Harvard Slate



Castle Grey



Dual Grey



Dual Brown



Hearthwood



Weatherwood



NW Driftwood



Aged Redwood



Earstone Cedar



Forest Green



Shadow Black



Greystone



Weathered Stone



Chapel Wood



Western Redwood

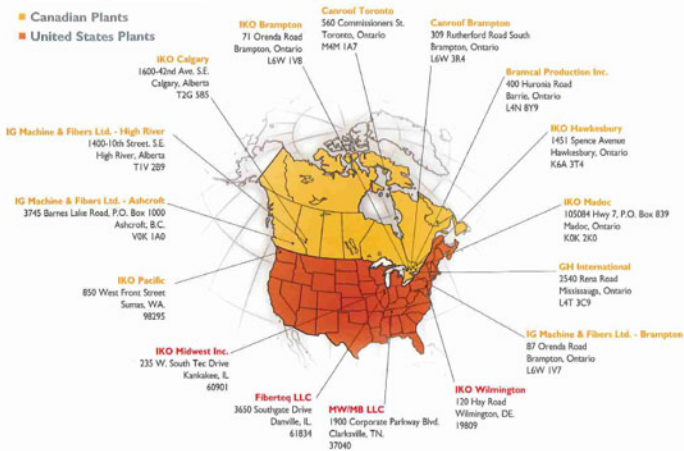
Product availability subject to shipping area. Please call your local distributor or visit our web site [www.iko.com](http://www.iko.com) for product and color availability in your area.

Note: Shingle swatches shown are as accurate as modern printing processes allow. Shingle chips shown do not fully represent the entire color blend range of the shingles. To ensure complete satisfaction please make your final color selection from several full size shingles and view a sample of the product installed on a home. The information in this literature is subject to change without notice. IKO assumes no responsibility for errors that may appear in this literature.

# IKO WORLDWIDE

## North American Manufacturing Plants

- Canadian Plants
- United States Plants



## European Manufacturing Plants



## European Sales Offices



## Asian Sales Office





WEST 2009

Thank you for considering IKO Roofing Products.  
For technical information on IKO's full line of  
superior roofing products please call:

**United States 1-888-IKO-ROOF**  
**Western Canada 1-800-661-1034**  
**Eastern Canada 1-888-766-2468**

or visit our web site at:

► [www.iko.com](http://www.iko.com)

**Note:** Shingle swatches shown are as accurate as modern printing processes allow. Shingle chips shown do not fully represent the entire color blend range of the shingles. To ensure complete satisfaction please make your final color selection from several full size shingles and view a sample of the product installed on a home.

The information in this literature is subject to change without notice.  
IKO assumes no responsibility for errors that may appear in this literature.

